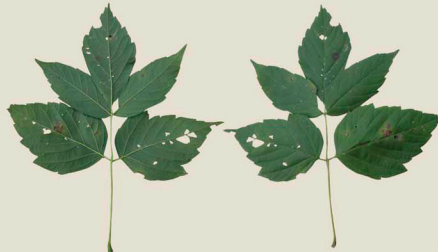


Fruit



Height range 30-50'



6-15"

Boxelder

Acer negundo

The Maple Family (Aceraceae)

Basic Description: Boxelder is a small to medium-sized tree with a short trunk, widely spreading branches and light green foliage. It has opposite, compound poison-ivy like leaves with three to seven leaflets. A hardy, fast-growing tree that can survive dry and extremely cold conditions.

Interesting Facts: The Plains Indians used the sugary sap as syrup.

Flower: Found on separate plants, the male and female flowers hang in clusters and are without petals.

Fruit: The female plant produces pairs of winged seeds called samaras.

Wildlife Value: Birds and small rodents eat the seed. Butterflies and moths drink the nectar and the leaves are a larval food for the Cercropia Silkmoth. Honey bees consume the nectar and pollen.

Habitat: Locally found growing in deep, moist soils on lakes, rivers and swamps, but also grows in the dry areas of the west and the Great Plains.

LEAF TYPE
COMPOUND



POLLINATOR
INSECTS



WILDLIFE VALUE
MEDIUM

