

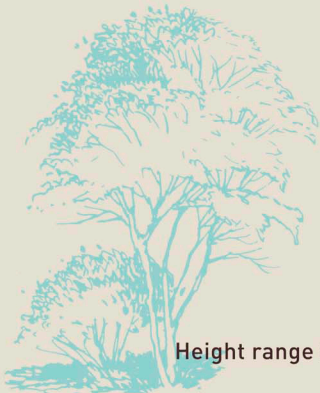


Flowers

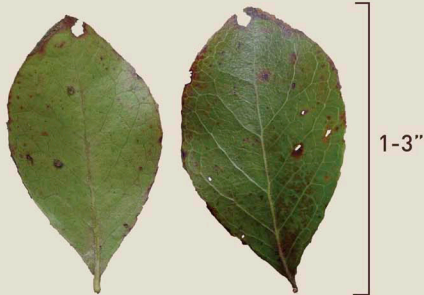


Bark

Fruit



Height range 8-30'



Tree Huckleberry

Vaccinium arboreum

The Heath Family (Ericaceae)

Basic Description: Small tree or large shrub with flaking grayish-brown to reddish bark and crooked trunk with twisted contorted branches. Leaves arranged alternately along stem, tardily deciduous to evergreen, turning a pink to deep maroon during winter months. Winter Huckleberry, Farkleberry and Sparkleberry are other common names.

Interesting Facts: North America's largest blueberry plant. A larval host for Striped Hairstreak Butterfly. Extracts of roots traditionally used to treat diarrhea.

Flower: Pink to white bell-shaped about .375" long, blooming March to May.

Fruit: Long stemmed, shiny black berries, .25-.5", ripening in fall. Edible by humans and wildlife.

Wildlife Value: Deer browse foliage, birds nest in the tree and the berries are eaten by all kinds of birds and wildlife. Flowers attract bees.

Habitat: Commonly found in pine-oak forests near streams or lakes.

LEAF TYPE

SIMPLE



POLLINATOR

INSECT



WILDLIFE VALUE

HIGH

