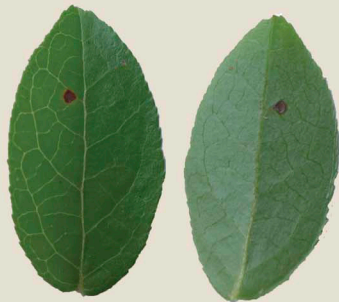




Flowers



Fruit



Up to 1.5"



Height range 4-12'

Elliott's Huckleberry

Vaccinium elliotii

The Heath Family (Ericaceae)

Basic Description: Shrub with alternate, deciduous leaves; reddish-brown, "shreddy" bark; small pinkish-white flowers and small black berries.

Interesting Facts: Also commonly called Summer Huckleberry because fruit mature in late spring / early summer. One of first plants to bloom in the spring, providing early spring flowers to its habitat. Fruit can be eaten raw or made into jellies or desserts.

Flower: Small, white to pink, elongated bell-shaped, in clusters of 3-5, appearing in spring with or just before the leaves.

Fruit: Small, edible black berry about .3" in diameter.

Wildlife Value: Fruit eaten by mammals and fruit-eating songbirds; pollen serves as a late winter/early spring food source for bees, butterflies, and other pollinators; not a common cover source.

Habitat: Upland forests, wetland areas; well-drained soil required.

LEAF TYPE

SIMPLE



POLLINATOR

INSECT



WILDLIFE VALUE

MEDIUM

