

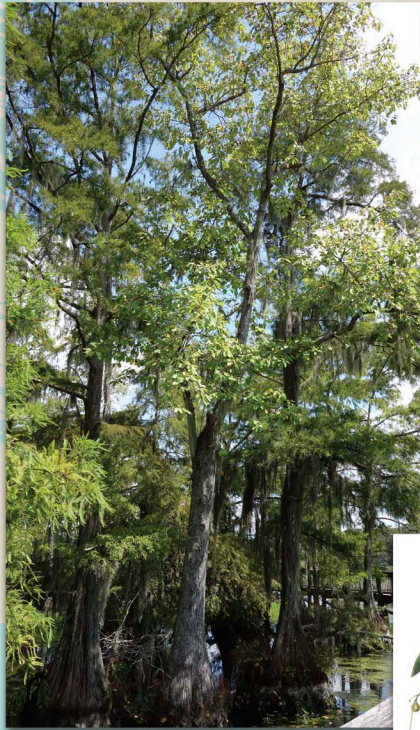
Habitat

Cypress-Tupelo Swamp

What are the two primary trees that are found in this swamp?
Bald Cypress and Water Tupelo. The Bald Cypress features needle-like leaves, red stringy bark, and "knees." The Water Tupelo features a gray oak-like bark, a smooth swollen base, deciduous oval leaves and a bluish fruit favored by birds.



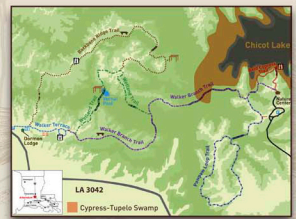
Great Egret



Barred Owl

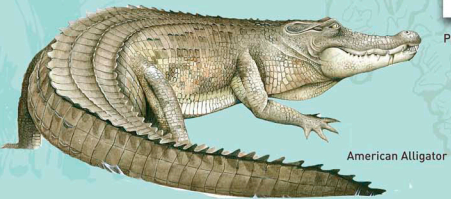


How is a Cypress-Tupelo swamp different from a marsh?
A swamp of any kind is characterized as a flooded area that supports trees. A marsh, on the other hand, does not support trees but does contain grasses.



Where on Chicot Lake do Cypress-Tupelo swamps tend to occur?
This habitat tends to occur in the coves or arms of the lake where the water level is shallow. This section of the lake is heavily forested with Baldcypress and Water Tupelo. The lake has many coves but this particular one gives the best view of a forested swamp.

What are Bald Cypress knees?
The knees, which are extensions of roots, were originally thought to give oxygen to the tree, though this was later disproven. Most experts now believe that the knees' function is to give stability to the trees in wet and soft soils.



American Alligator



Prothonotary Warblers



River Otter

What animals can be found in a Cypress-Tupelo swamp?
These shallow swampy areas provide good nesting habitat for both Wood Ducks and American Alligators. Other bird species found in this type of swamp include Northern Parula and Prothonotary Warblers, heron and egret species, and Barred Owls. The swamp's supply of fish, crawfish, and amphibians makes it a good habitat for occasional River Otters.



American Bullfrog



Wood Duck